



EXIT



3RD FLOOR, 56A POLAND ST, W1F 7NN

1,287 sq ft



Plug & Play



Great Natural Light



Phone Booths



Meeting Rooms



Lift Access



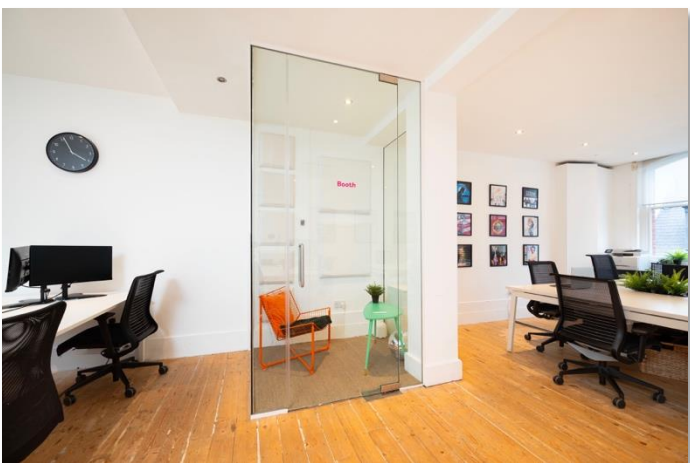
Exposed Brick



VIEW NOW 07771 1180072 OR 07551 158799



EXIT



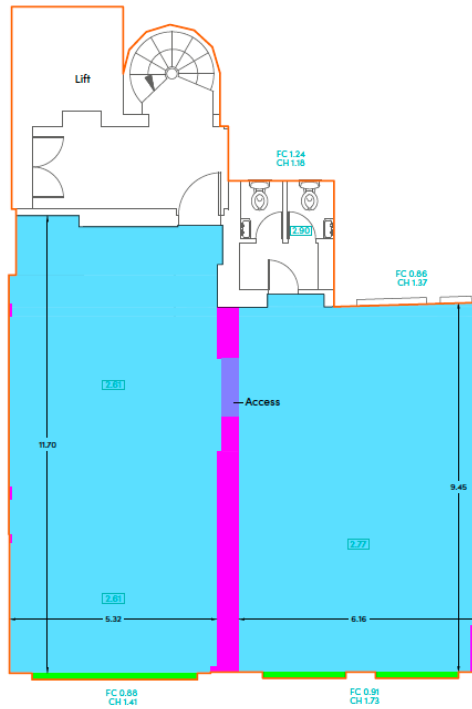


EXIT





EXIT



Third Floor

Property
55-56a Poland Street
London
W1F 7NL

IPMS2:Office	
IPMS2:Office	162.7 sq m, 1,751 sq ft
Total Area:	162.7 sq m, 1,751 sq ft

IPMS3:Office	
IPMS3:Office	125.9 sq m, 1,355 sq ft
Total IPMS3 Area:	125.9 sq m, 1,355 sq ft
The following breakdown lists the limited use areas	
Canopies	4.9 sq m, 53 sq ft
Interface adjustment	1.3 sq m, 14 sq ft
Access	0.6 sq m, 6 sq ft

Notes

- All dimensions to be checked on site and not scaled from this drawing.
- Halls shall be included in writing of any description.
- All dimensions are in metres, scaled from this drawing.
- All areas are measured in accordance to the RICS Property Measurement Standard.

HOLLIS

140 London Wall
London
EC2Y 5DN

T +44 20 7622 9555
W hollisglobal.com



AREA REFERENCING			
DATE	BY	SCALE	REVISION
26.05.2021	AB		
17/01	GA1	1:1	
001A	001	04.5	001
001	001	00001	00001
001	G	00001	001



MAKING MOVES

HEAD OFFICE

8 Devonshire
Square, London
EC2M 4YJ

WEST END

Mortimer House,
Fitzrovia, London,
W1T 3JH

TEL 020 3595 3121

E-MAIL info@makingmoves.london

WEB www.makingmoveslondon.co.uk