



EXIT



4TH FLOOR, 66 WARDOUR STREET, LONDON, W1F 0TA

2,240 sq ft



Plug & Play



Showers



Lift Access



Prime Soho Location



Great Levels of
Natural Light

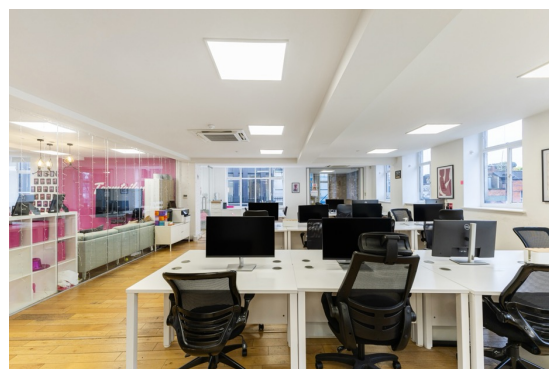


Meeting Rooms & a
Boardroom



VIEW NOW 07471 998225 OR 07551 158799

info@makingmoves.london





DESCRIPTION

66 Wardour Street offers exceptional natural light, an open-plan run of desks, dedicated breakout space, and generously proportioned meeting rooms including a large boardroom. The fully fitted office provides a high-quality workspace ready for immediate occupation.

The building further benefits from an attractive reception area, 24-hour access, demised WCs, and lift access throughout.



TERM

66 Wardour Street is available by of a Sublease or an Assignment up until February 2027.

A new Lease is also available with the Landlord with a flexible term length available.

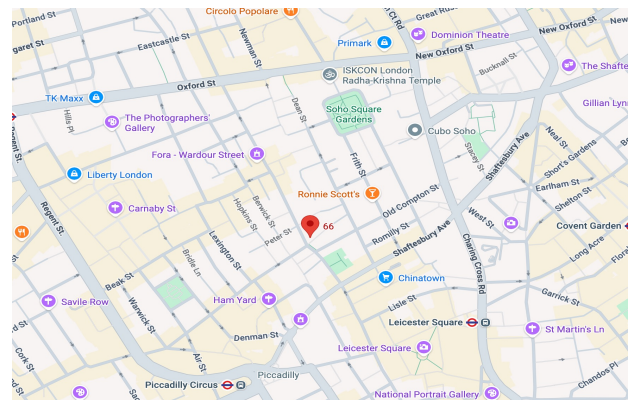
Also available Managed.



LOCATION

66 Wardour Street is located in the heart of Soho, one of London's most vibrant and well-connected business districts, with Tottenham Court Road, Leicester Square and Piccadilly Circus Underground stations all within easy walking distance, providing access to multiple tube lines including the Elizabeth line.

The area is also well served by bus routes and cycle infrastructure, making commuting straightforward and flexible for employees. Surrounded by an exceptional range of cafés, restaurants, shops, gyms and cultural hotspots, the location offers outstanding everyday amenities and a lively environment that supports employee wellbeing, collaboration and after-work socialising.



Floor	Size (sqft)	Quoting Rent	Service Charge	Business Rates	Total (pa)	Total (pcm)
4 th	2,240	£61.61	£10.61	£26.44	£220,998	£18,417



GEORGE MARMENT

Email: gpm@makingmoves.london

Tel: 07551 158 799



RACHEL STEAD

Email: rachel.stead@makingmoves.london

Tel: 07471 998 225



EXIT





EXIT



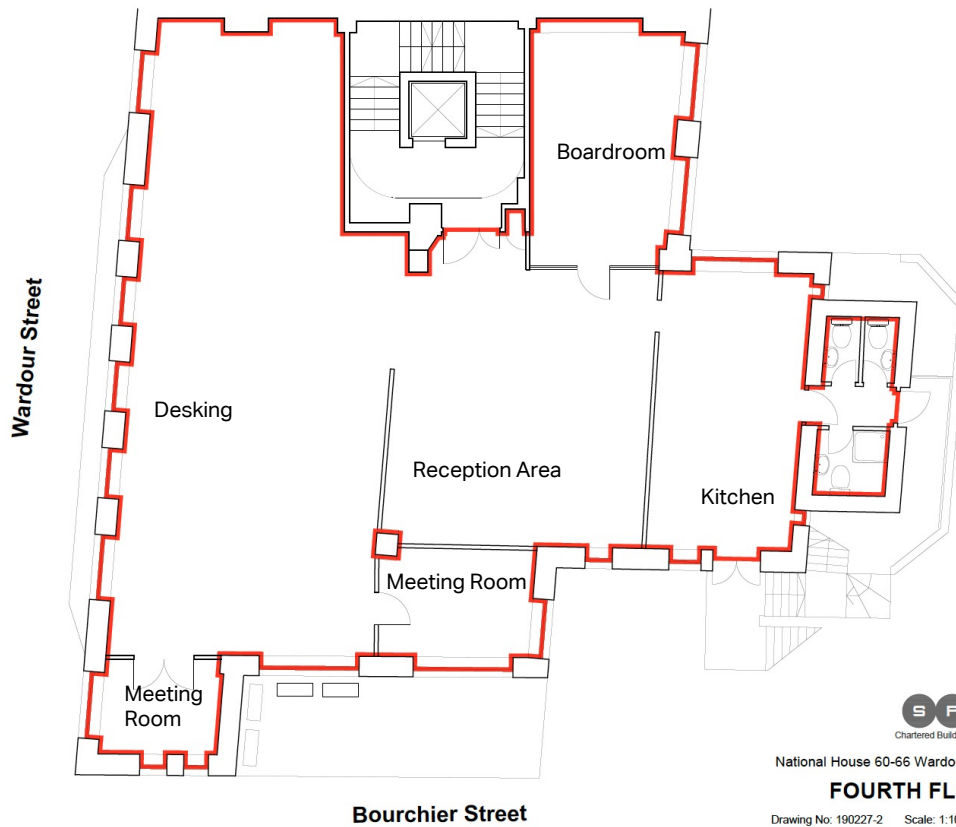
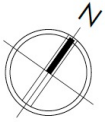


EXIT

National House, 60-66 Wardour Street, London W1F 0TA

FOURTH FLOOR PLAN

Scale: 1:100 @ A3



National House 60-66 Wardour Street, London W1F 0TA

FOURTH FLOOR PLAN

Drawing No: 190227-2 Scale: 1:100 @ A3 Date: 27 February 2019
SPS Associates Ltd, Phoenix House, 24 High Street, London E11 2AG | T: 020 8530 4199 | E: sanjay@sp-associates.co.uk



MAKING MOVES

HEAD OFFICE

8 Devonshire
Square, London
EC2M 4YJ

WEST END

Mortimer House,
Fitzrovia, London,
W1T 3JH

TEL 020 3595 3121
E-MAIL info@makingmoves.london
WEB www.makingmoveslondon.co.uk