



EXIT



WELL COURT, 14-16 FARRINGDON LANE, EC1R 3AU

4,359 SQ FT



Plug & Play



Air Conditioning



Prime Farringdon
Location



Self-contained
Building



Good Levels of
Natural Light



Multiple Meeting
Rooms.



VIEW NOW 07471 998225 OR 07551 158799

info@makingmoves.london





DESCRIPTION

Well Court is a self-contained office building offering a high-quality, fully fitted workspace across multiple floors. The space includes dedicated meeting rooms, open-plan working areas, and well-appointed tea points, making it ready for immediate occupation.

Abundant natural light flows throughout the building, creating a bright and welcoming environment ideal for productive working. With a modern fit-out and flexible layout, Well Court provides a professional setting in the heart of Clerkenwell.



TERM

Available by way of an Assignment or Sublease until 31st July 2027.

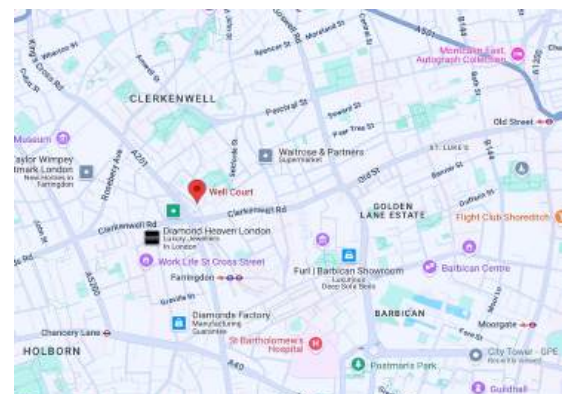
A new Lease is also available with the Landlord.



LOCATION

Well Court is ideally positioned in Clerkenwell, one of London's most dynamic business districts, just a few minutes' walk from Farringdon Station with access to the Elizabeth Line, Thameslink, and Underground.

Surrounded by a vibrant mix of cafés, restaurants, and amenities, it's perfect for lunch breaks, after-work socialising, and informal meetings. Just six minutes away, Exmouth Market adds further appeal with a lively selection of street food and independent retailers.



Floor	Size (sqft)	Quoting Rent	Service Charge	Business Rates	Total (pa)	Total (pcm)
Building (1 st -4 th floors)	4,359	£47.50	£0	£15.75	£275,707	£22,976



GEORGE MARMENT

Email: gpm@makingmoves.london

Tel: 07551 158 799



RACHEL STEAD

Email: rachel.stead@makingmoves.london

Tel: 07471 998 225

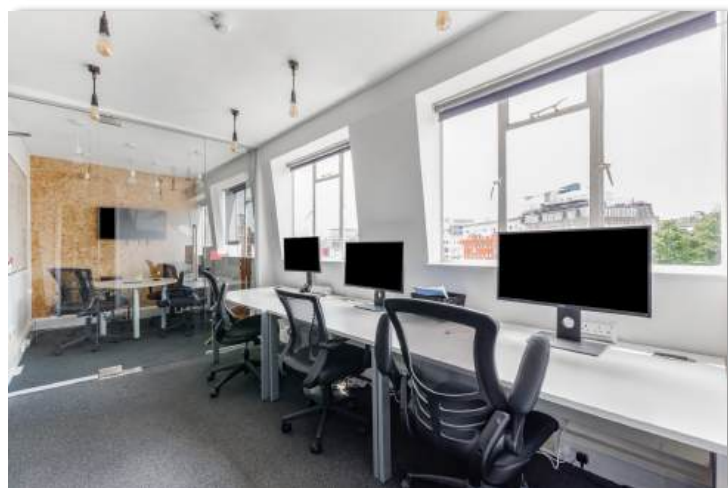
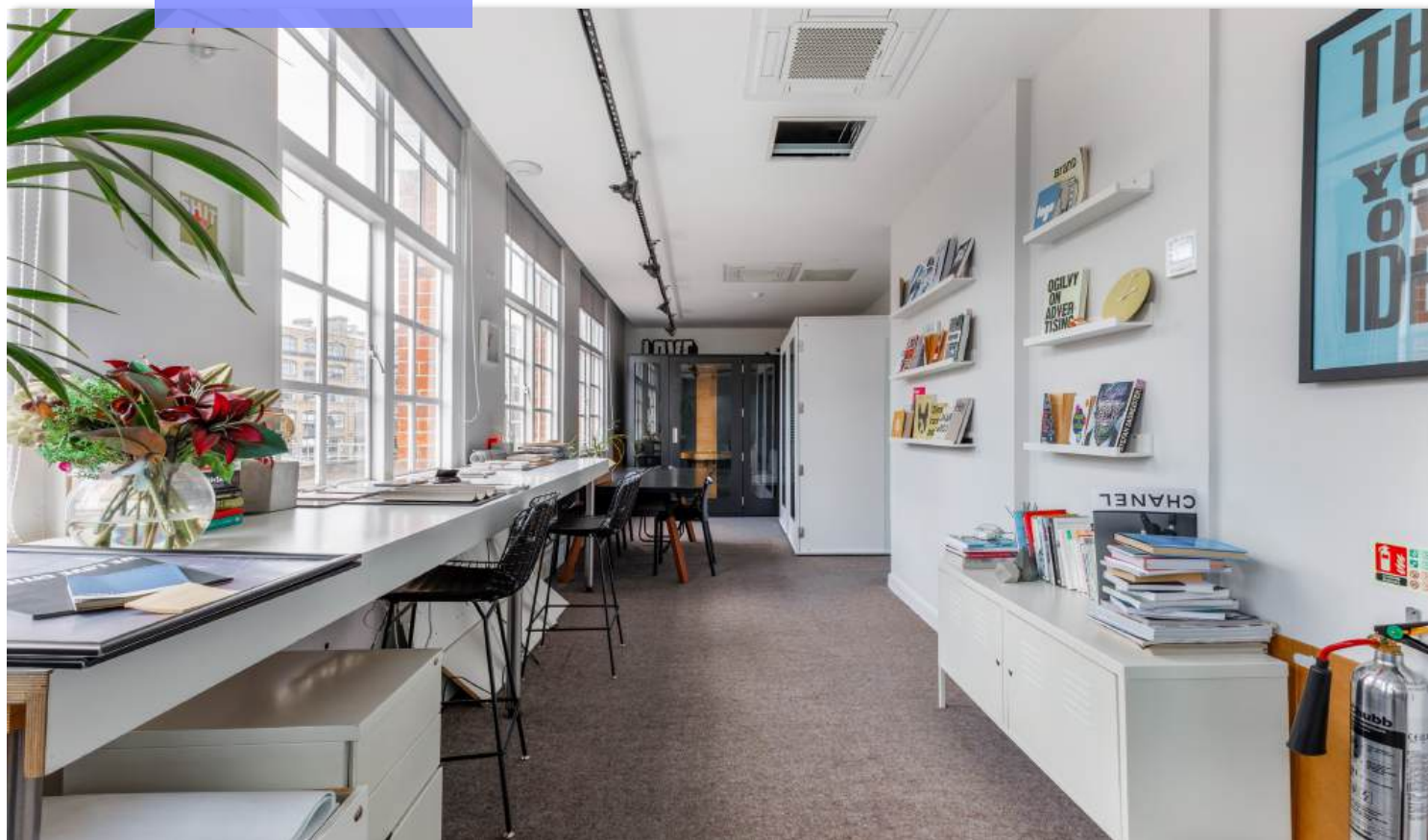


EXIT





EXIT





MAKING MOVES

HEAD OFFICE

WeWork,
8 Devonshire Square
London
EC2M 4YJ

WEST END

Mortimer House,
Fitzrovia, London,
W1T 3JH

TEL 020 3595 3121
E-MAIL info@makingmoves.london
WEB www.makingmoveslondon.co.uk