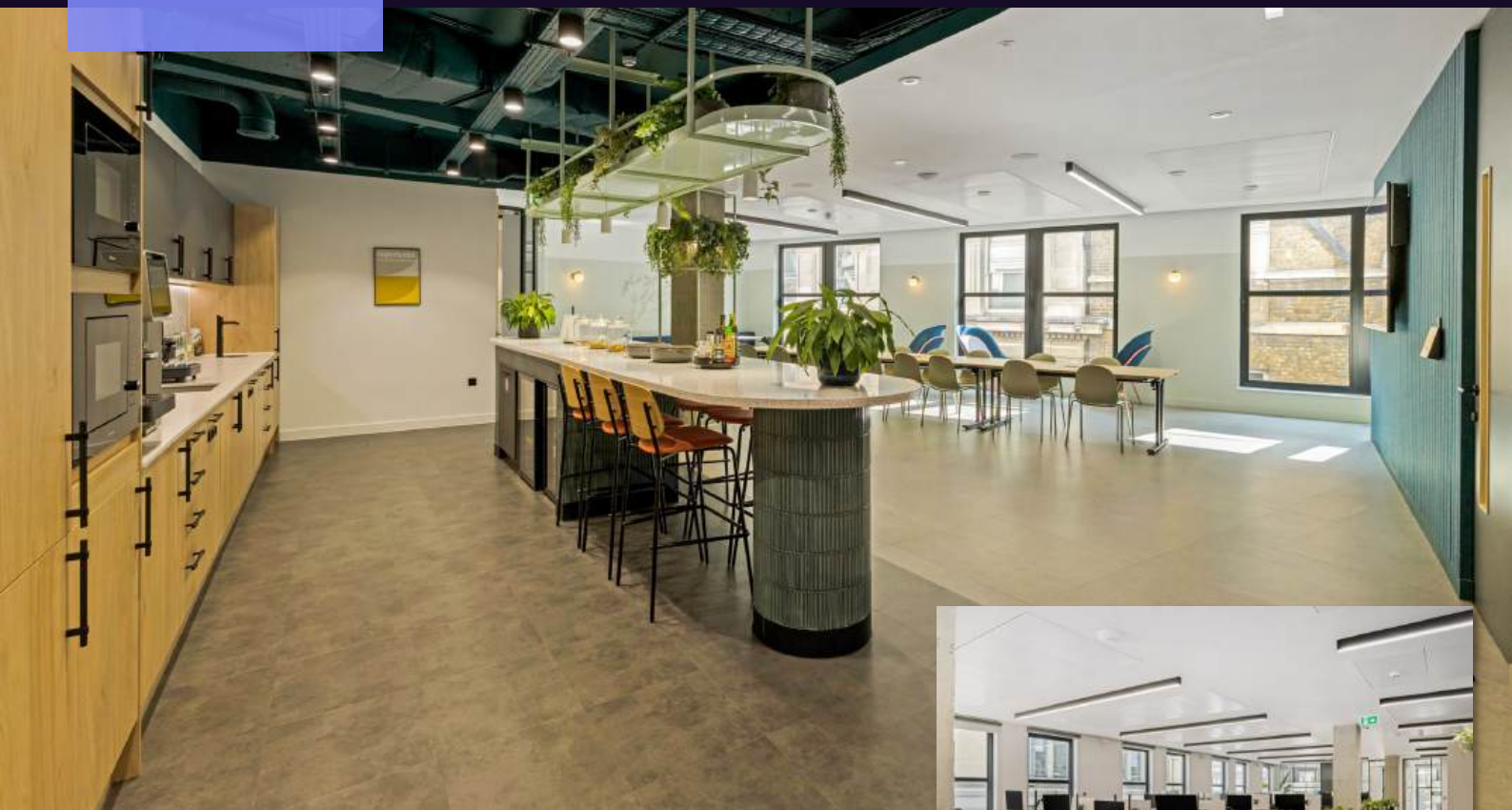




EXIT



**3rd FLOOR,
16 EASTCHEAP,
LONDON,
EC3M 1BD**

5,790 SQ FT



Plug & Play



Multiple Boardrooms & Meeting Rooms



Communal
Roof Terrace



High Specification
Kitchen & Breakout



Impressive
Manned
Reception



Bike Storage,
Showers & Towel
Service



VIEW NOW 07471 998225 OR 07551 158799



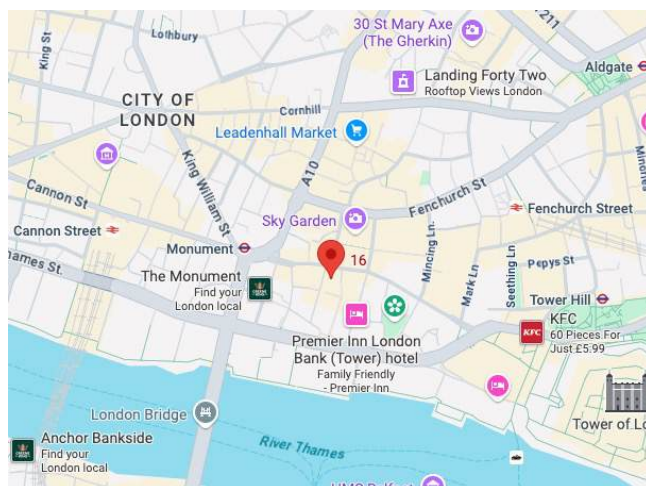
The building features an impressive staffed reception with lounge and coffee machine, communal roof terrace, bike storage, showers (with towel service), and lockers.



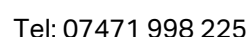
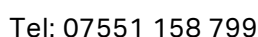
A new, longer lease is also available direct with the landlord.



It is just a 2-minute walk from Monument Station and close to Bank Station, providing excellent connectivity via the Underground and DLR. Additionally, Fenchurch Street, Cannon Street, and London Bridge stations are all within walking distance, offering convenient access to overground services.



3rd Floor	5,790	£64.77	£12.92	£33.07	£641,300	£53,442
-----------------------------	-------	--------	--------	--------	----------	---------



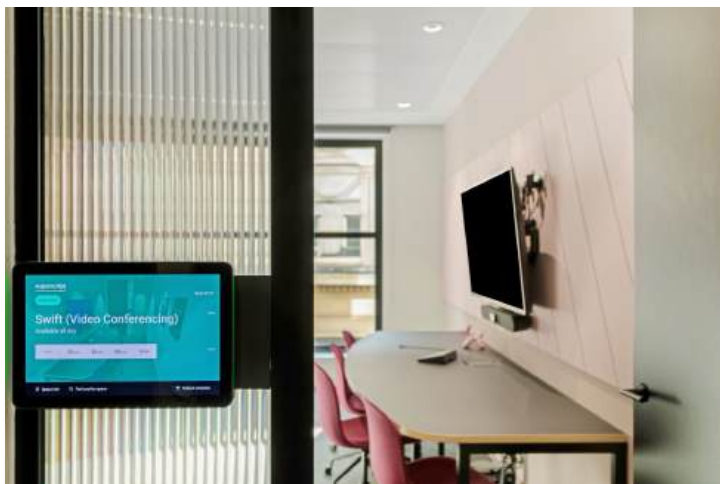


EXIT



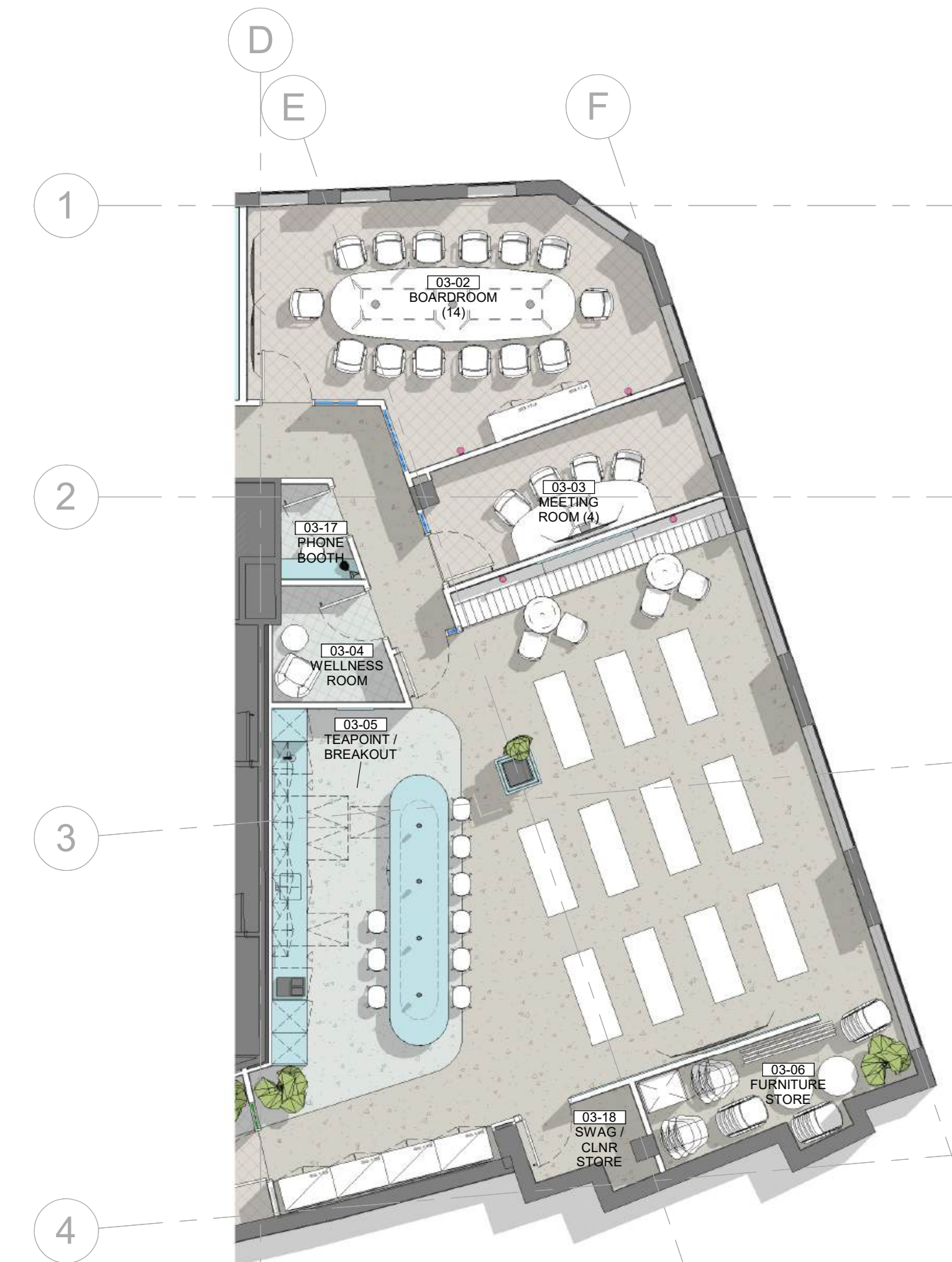


EXIT





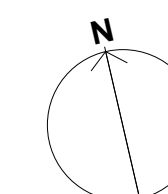
1 **Proposed General Arrangement - Level 03**
1 : 100



2 **Event Space - Yoga Configuration**
1 : 100



3 **Event Space - Conference Configuration (80 persons)**
1 : 100





MAKING MOVES

HEAD OFFICE

8 Devonshire Square,
London EC2M 4PL

WEST END

Mortimer House,
Fitzrovia, London,
W1T 3JH

TEL 020 3595 3121
E-MAIL info@makingmoves.london
WEB www.makingmoveslondon.co.uk