

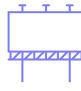


**EXIT**





# **SELF CONTAINED, GROUND FLOOR, 19-23 FITZROY STREET, W1T 4BP**


**3,400 SQ FT**


 Street  
Frontage &  
Branding  
Opportunity

 Plug & Play

 Large  
Kitchen &  
Breakout

 Creative  
Style

 Floor to Ceiling  
Windows

 Boardroom,  
Meeting  
Rooms, and  
Phone Booths



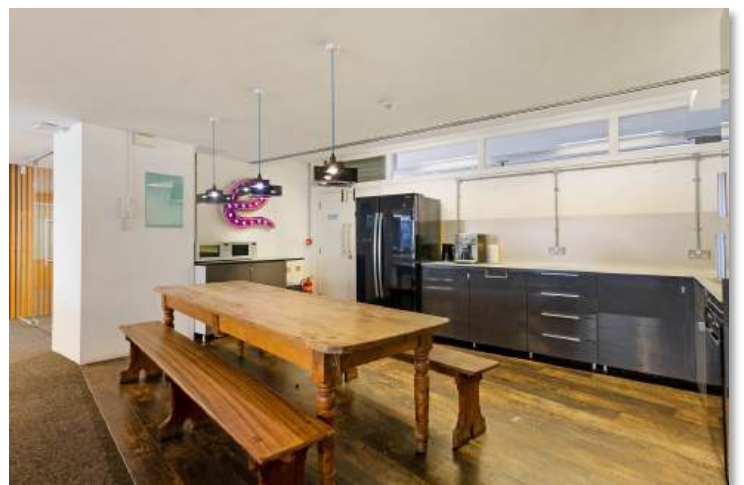
**VIEW NOW 07471 998225 OR 07551 158799**

info@makingmoves.london





EXIT





EXIT





MAKING MOVES

## HEAD OFFICE

WeWork,  
8 Devonshire Square  
London  
EC2M 4YJ

## WEST END

Mortimer House,  
Fitzrovia, London,  
W1T 3JH

**TEL** 020 3595 3121

**E-MAIL** [info@makingmoves.london](mailto:info@makingmoves.london)

**WEB** [www.makingmoveslondon.co.uk](http://www.makingmoveslondon.co.uk)