



MAKING MOVES



EXIT



1st FLOOR,
1 RED PLACE,
LONDON,
W1K 6PL

2,866 SQ FT

HIGHLIGHTS:

- Plug & Play
- Open Plan Office Space
- Boardroom, Meeting Rooms & Phone Booths
- Kitchen & Breakout Space
- Great Natural Light
- Dual Aspect Windows
- Great Natural Light
- Large Terrace
- Demised WCs
- Commissionaire
- Air Conditioning
- Bike Racks & Showers

WE ARE OFFICES

Contact us TEL 020 3595 3121 E-MAIL info@makingmoves.london WEB www.makingmoves.london

LOCATION:



The office is well located in Mayfair just off Park Street, with a range of amenities nearby, including restaurants, bars, cafes and various shopping outlets in proximity to Oxford Street.

Marble Arch and Bond Street stations are both within a short walk of the building.



DESCRIPTION:



This office offers a high specification, fully furnished space with great natural light in a spacious open plan setting.

The office comes with a 14 person boardroom, 2 meeting rooms, 3 exec offices/small meeting rooms and 2 phone booths. There is a kitchen / breakout and access to a large terrace outside the office.

The building has a manned reception entrance, bike storage and shower facilities.

TERMS:



Available by way of an assignment or sublease until June 2027.

A new lease is available direct with the landlord.

EPC:



An EPC is available on request.

VIRTUAL TOUR:



[Click here to view virtual tour](#)

FLOOR AREAS & OUTGOINGS:

Floor	Size (sqft)	Quoting Rent	Service Charge	Business Rates	Total (pa)	Total (pcm)
1 st	2,866	£85.00	£10.00	£35.73	£374,672	£31,222

VIEWINGS:

Strictly through appointment by sole agent:

George Marment

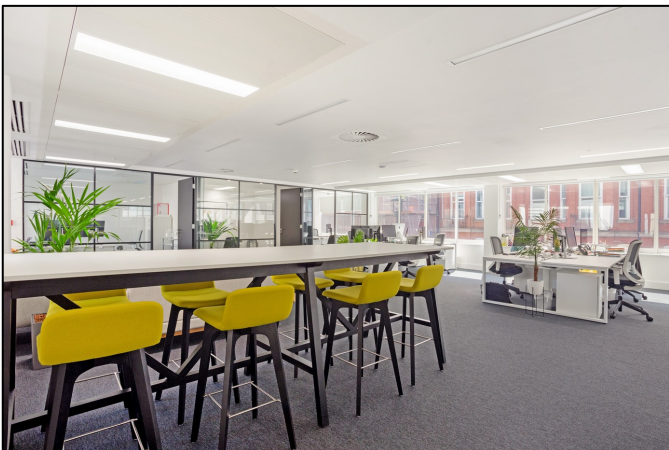
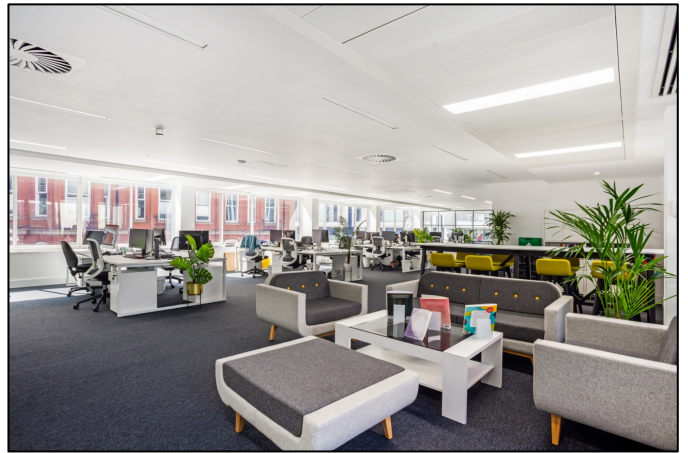
Email: gpm@makingmoves.london

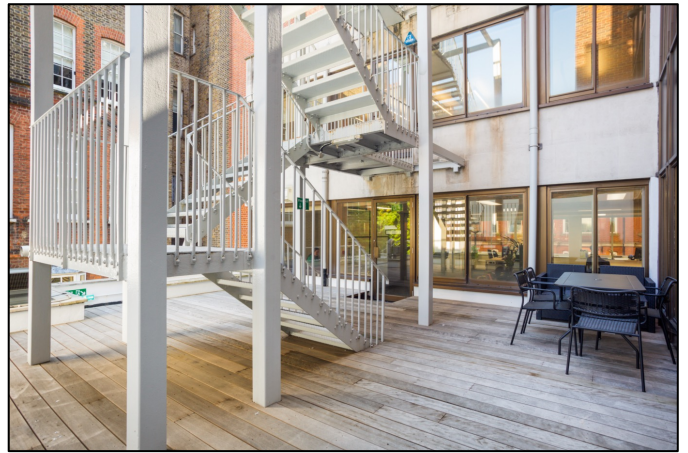
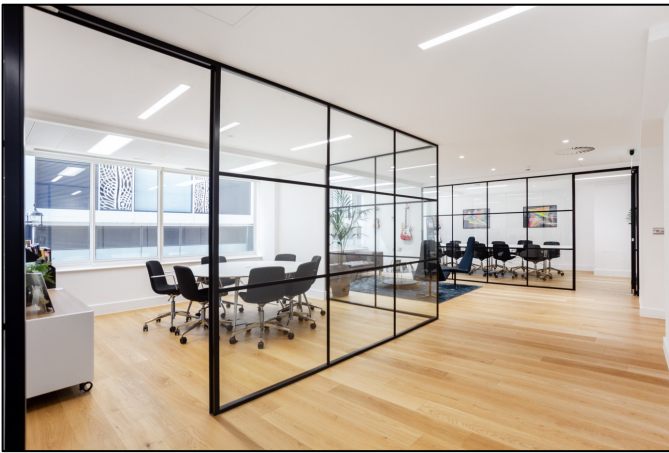
Tel: 07551 158799 or 020 3595 3121

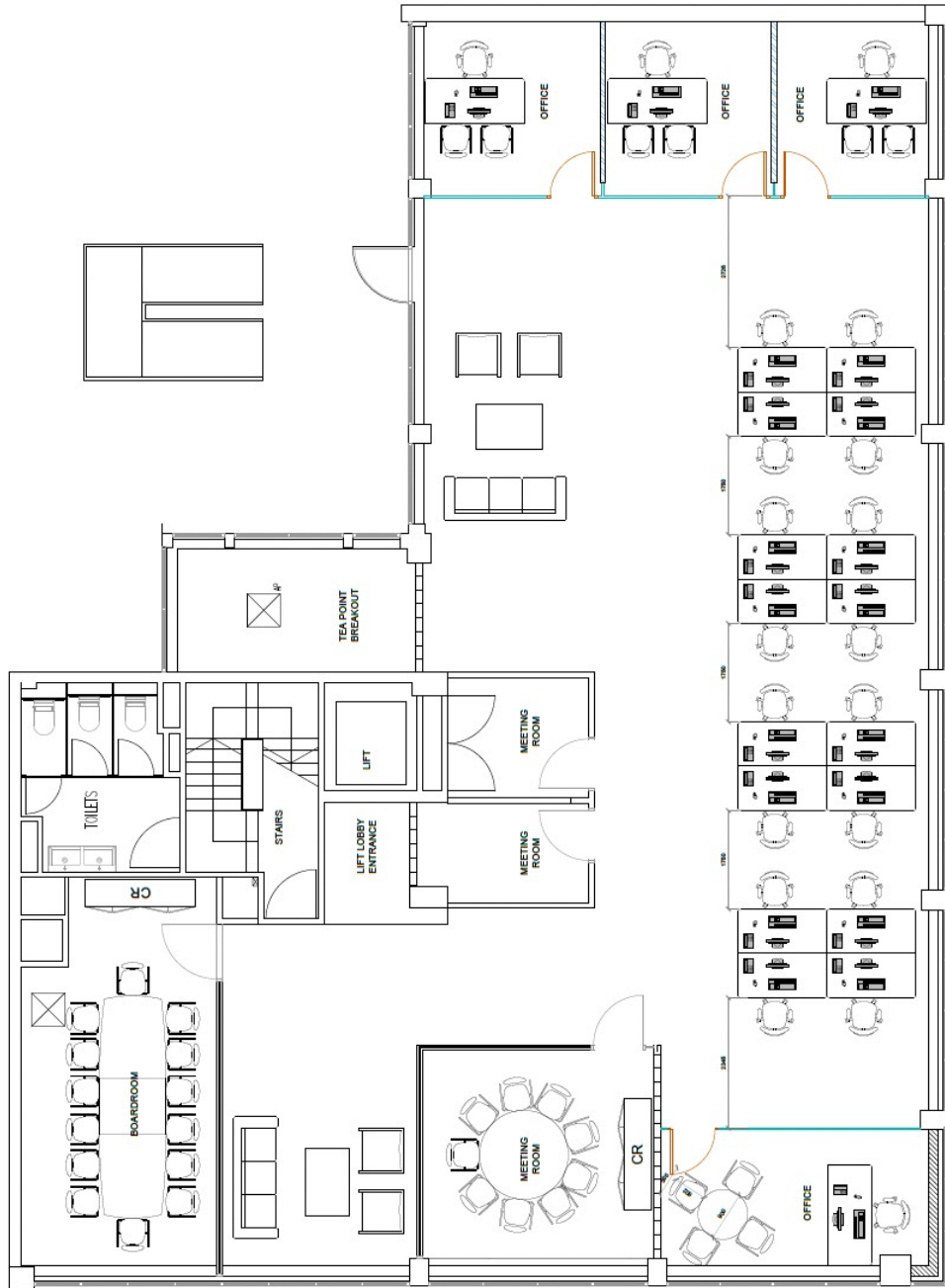
Matt Mannix

Email: mmx@makingmoves.london

Tel: 07771 180072 or 020 3595 3121







WE ARE OFFICES

Contact us TEL 020 3595 3121 E-MAIL info@makingmoves.london WEB www.makingmoves.london

