



**SELF CONTAINED,  
111 GREAT RUSSELL  
STREET, BLOOMSBURY,  
WC1B 3NQ**

**OFFICE TO LET  
5,733 SQ FT**

#### HIGHLIGHTS:

- Recently Refurbished Plug & Play Office
- Self Contained Entrance
- 10 Person Boardroom
- 3 Meeting Rooms
- Large Kitchen & Breakout Area
- Great Levels of Natural Light
- Air-Conditioning
- Secure Bike Storage
- Reception Entrance

**WE ARE OFFICES**

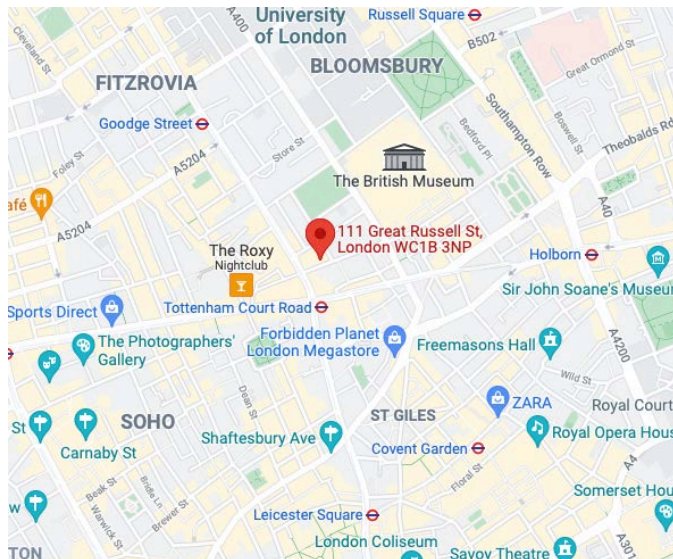
Contact us **TEL** 020 3595 3121 **E-MAIL** [info@makingmoves.london](mailto:info@makingmoves.london) **WEB** [www.makingmoves.london](http://www.makingmoves.london)

## LOCATION:



The office is ideally located opposite Tottenham Court Road Station, served by the Central and Northern lines. This will be enhanced following the introduction of Crossrail in 2022. On the Elizabeth Line, the journey time between Tottenham Court Road and Heathrow will be 28 minutes.

Oxford Circus, Holborn & Goodge Street Station are all within a short walk of the building.



## DESCRIPTION:



The office was recently refurbished to a high specification including a new kitchen, breakout area, boardroom and multiple meeting rooms. The space is provided fully furnished and there is the opportunity to install showers with ease.

The office is self contained with a dedicated ground floor reception entrance and bike storage

## TERMS:



The office is available for a negotiable term with the landlord

## EPC:



The building has an EPC rating 'C'

## VIRTUAL TOUR:



[Click here to view the virtual tour](#)

## FLOOR AREAS & OUTGOINGS

Floor	Size (sqft)	Quoting Rent	Service Charge	Business Rates	Total (pa)	Total (pcm)
1st	5,733	£62.50	N/A	£16.84	£454,856	£37,905

## VIEWINGS

**Strictly through appointment by sole agents:**

George Marment

**Email:** [gpm@makingmoves.london](mailto:gpm@makingmoves.london)

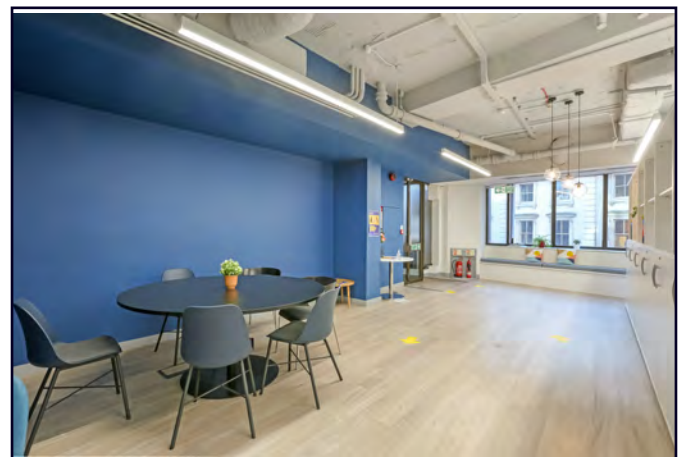
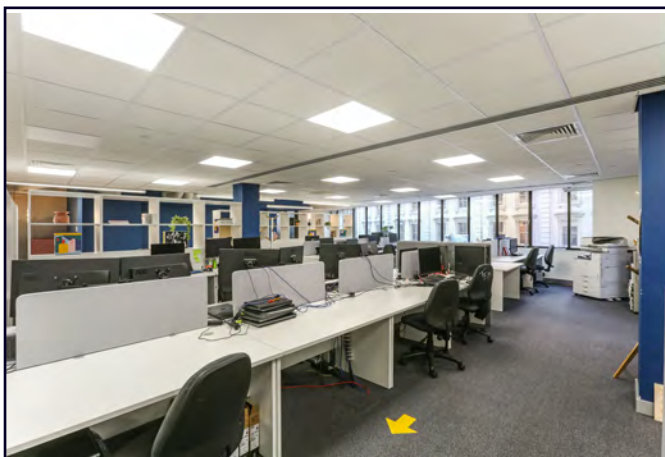
**Tel:** 07551 158799 or 020 3595 3121

Phil Snowden

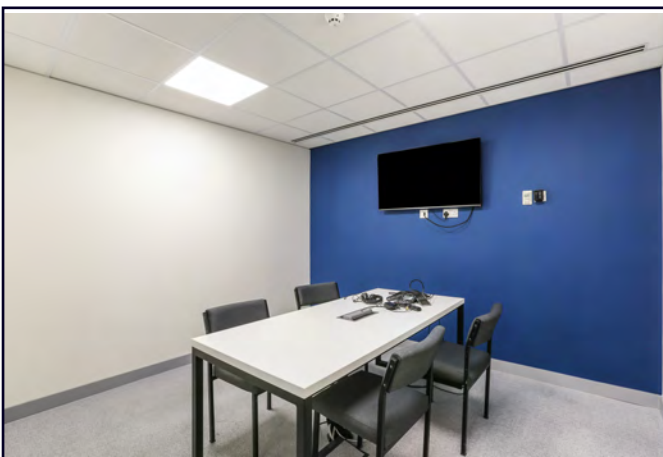
**Email:** [ps@makingmoves.london](mailto:ps@makingmoves.london)

**Tel:** 07765 722626 or 020 3595 3121



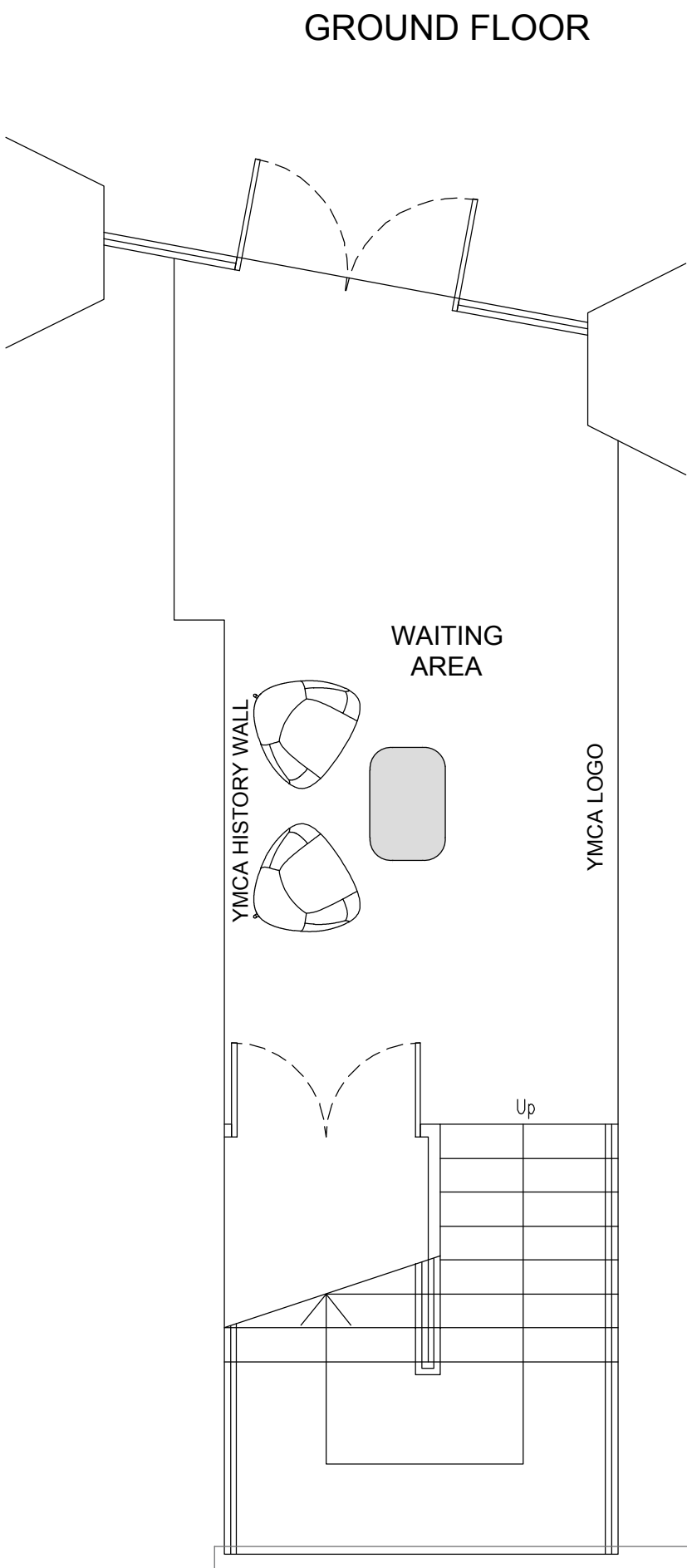
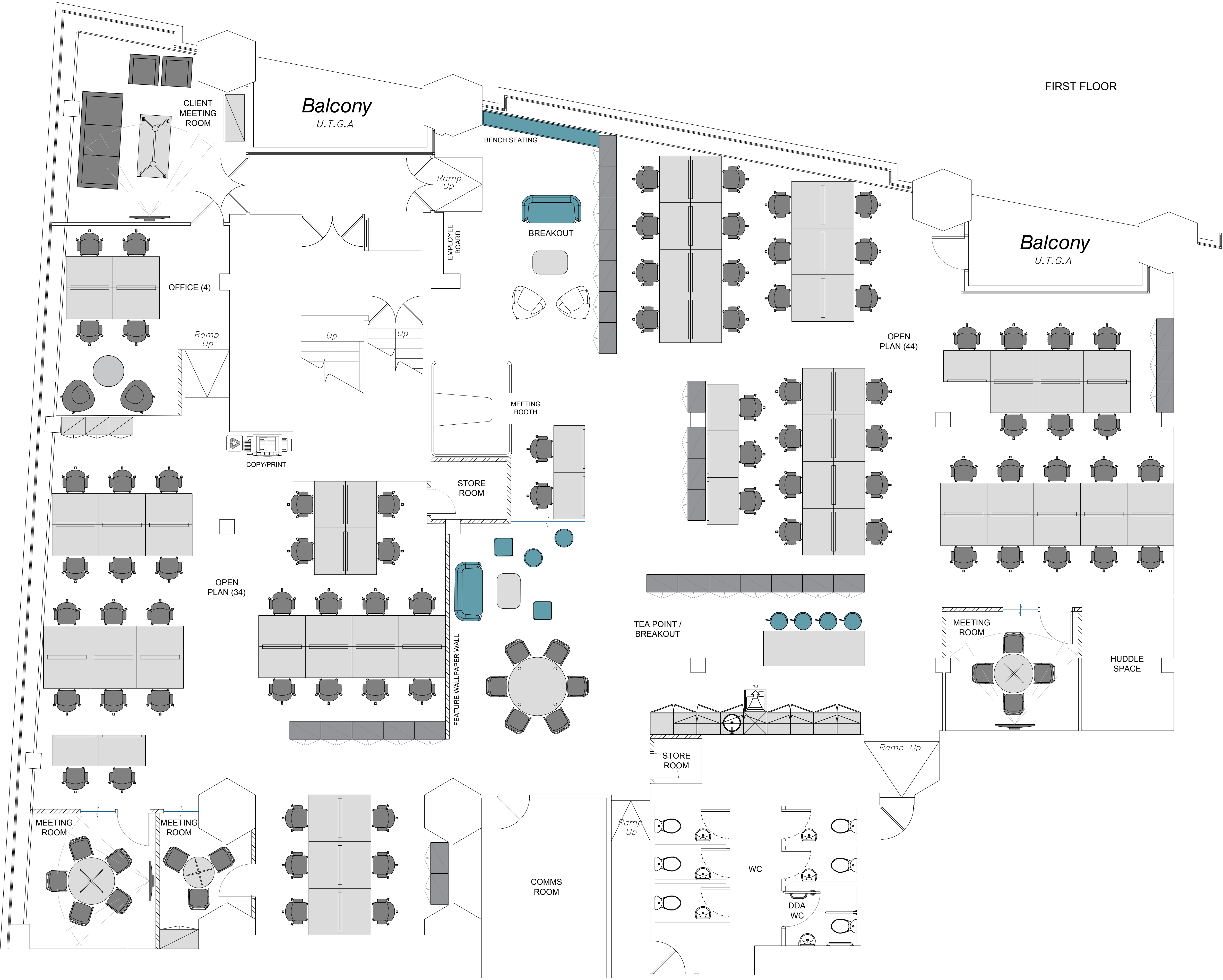






This drawing is the property of Woodalls Design LLP and may not be copied or reproduced without consent. All dimensions must be checked on site before commencing work. No dimensions to be scaled from drawing.

Woodalls Design LLP asserts full Intellectual Property Rights in connection with designs, layouts and information contained within this drawing. Rights are transferred to the named client only upon receipt of full agreed payment in connection with services provided.



P2	Amendments in office and storage size	18.02.19	DLA	SB
P1	First Issue	11.02.19	DLA	SB
Revision	Description	Date	By	Ckd

## Preliminary

Project No: 00000  
Date:

Client: YMCA

Project Address:

Drawing Title: General Arrangement Plan

Drawn: DLA	Scale: 1:50 @ A1
Checked: SB	Date Created: 04.02.2019

**Woodalls** Victoria House  
1-3 College Hill  
London EC4R 2RA  
+44 (0)20 7489 7669

Project Name	Floor	Series	Stage	Revision
YMCA	01	10	P	2





19 Willow Street  
London  
EC2A 4BH

Henry Wood House  
2 Riding House Street  
W1W 7FA

**WEB** makingmoves.london

An abstract graphic design consisting of three thick, wavy, overlapping diagonal bands. The top band is dark blue, the middle band is bright orange, and the bottom band is a lighter blue. Each band contains the phrase "Moves Making Moves Making Moves" written in a bold, sans-serif font, following the curve of the band. The text is white on the dark blue band and black on the other two bands. The overall composition is dynamic and modern.